

Représentant industriel

FRAMATOME

framato**me**

Framatome is a major international player in the nuclear energy market recognized for its innovative solutions and value-added technologies for designing, building, maintaining, and advancing the global nuclear fleet. The company designs, manufactures and installs components, fuel and instrumentation and control systems for nuclear power plants and offers a full range of reactor services. With 14,000 employees worldwide, every day Framatome's expertise helps its customers improve the safety and performance of their nuclear plants and achieve their economic and societal goals. Framatome is owned by the EDF Group (75.5%), Mitsubishi Heavy Industries (MHI - 19.5%) and Assystem (5%). Training Our industry is going through a time of transition with a generation of plant personnel retiring and new professionals entering the workforce. With Framatome's training portfolio, we are working to foster operational excellence, to facilitate knowledge transfer and to provide utility employees with the information and skills they need to continue operating nuclear energy facilities safely and at optimal performance. Our training offer covers several introductory courses and also a number of up to date Framatome technology courses. Our trainers are specialists and will share with you their technical experience. Our pedagogy is active. Many courses are illustrated by on real time simulator exercises. Our catalogue includes a range of standard courses. With our experience we can also offer individual programs specific to your company.

A world leader in power plant simulators

We are particularly experienced in the development of simulators for under-construction plants, such as the simulators developed for Flamanville 3 and Taishan EPR units. Our integrated system developed by CORYS aims at enhancing pedagogy for better understanding of the physical phenomena, plant processes and cycle events of a PWR nuclear plant. It combines simulators and training content, and alternates between periods of tuition, tutorials, and practical exercises. Our training suite covers most of the needs of an academic nuclear engineering or NPP design program. These tools can also serve to train engineers working in the nuclear industry in order to improve general knowledge of power plant design and operation. The training suite comprises 3 off-the-shelf set of simulation tools which, used together, are the first integrated training center available worldwide. It enables to train people for all kinds of situations: from normal operations to severe accidents and I&C regulation design:

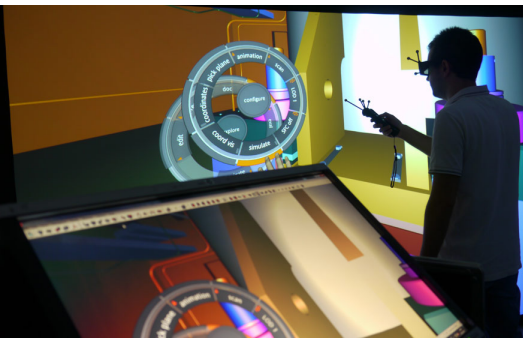
- PWR C1300 is dedicated to physics principles, normal operations and PWR concepts.
- PWR X1300 is a more advanced version and enables trainees to focus on and become familiar with abnormal procedures and accident handling.
- The PWR M series is a set of modules that provides dedicated self-training on precise topics (systems and regulation) typical of a large set of PWRs.

Reactors training center

Our reactors training center in France offers over 35 training courses in the following fields:

- Introduction courses for PWRs
- Advanced courses for PWRs
- PWR operation

Our specific courses handle topics such as the discovery of the ASME, RCC-E, RCC-M, RCC-MRx or RSEM codes. Our courses are provided on demand and can be delivered in our training center in Paris or at other locations upon request.



Key figures

14,000 employees
Experience on over **250**
reactors worldwide
3,500 patents covering
about 680 inventions
750 open positions in
2018 **320** apprentices
per year

www.framatome.com •
formation.reacteurs@framatome.com

